

Frogs



Our Scouting program is based on the Scouts' own activity ideas and part of the program process will involve the Scouts deciding which Challenge Area is appropriate for the activity. We know that an activity can fit within more than one Challenge Area.

Take the humble frog for example. Frogs are an important part of our natural environment. They help us to understand how healthy our creeks and wetlands are, and their tadpoles eat up all the insects that lay their eggs in water. This means that in summer they help to keep down the number of mosquitos!

How much do we know about the frogs in our community?
What environment suits a frog population, why do frogs start chirping as the sun goes down, do all frogs sound the same?

All these questions and our Scouts pursuing the answers will determine which of the four Challenge Areas best applies. And it will be different for each Scout. Our humble frog!

This week's program ideas are based around the successful FrogID program run by the Australian Museum.

Did you know?

Frogs are amphibians. They evolved ~280 million years ago.

Amphibian means 'two lives'.

Amphibians include frogs, toads, salamanders and caecilians (snake-like animals).

Australia has ~200 species of native amphibians (all frogs!).

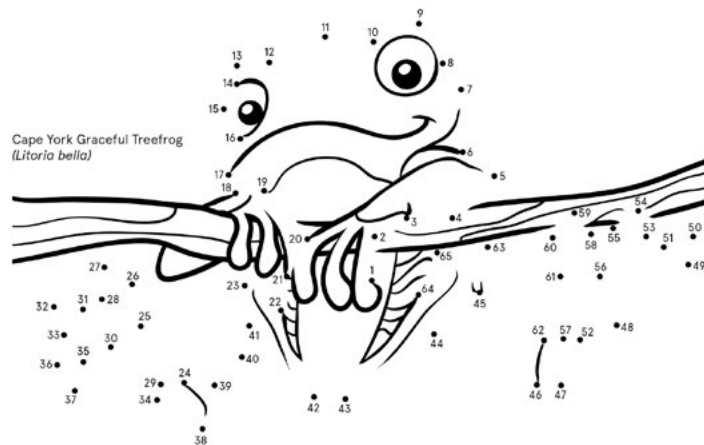
Frogs are cold-blooded, vertebrate animals.

What Colour Is Your Frog?

Complete the dot-to-dot picture and colour your frogs!

Colour the frogs

Share your coloured in frog on Instagram with #myFrogID and we will repost our favourites!



Frog Bits

Instruction: On the Activity sheet, draw lines to connect the labels to the correct parts of the frog.

Protruding eyes

Tympanum (ear drum)

Backbone and internal skeleton

External nare (nostril)

Simple sac-like lungs

Fore limb

Digits (4 fingers, 5 toes)



Soft, moist skin

Adults have no tail

Hind limb (for jumping)

Frog Quiz

How well do you think you know frogs?
Have a go at some of these froggy questions.

Q 1 – Circle your answer

Where do frogs live?

- A. On land
- B. In water
- C. Both land and water

Q 2 – Circle your answer: True or false

Frogs can change the colour of their skin to camouflage themselves.

True or False

Q 3 – Put the frog life cycle in order

- A. Metamorph (tail still present, fore limbs developed)
- B. Eggs
- C. Adult frog
- D. Tadpole

My frog life cycle is 1. _____ 2. _____ 3. _____
4. _____

Q 4 – Circle your answer: True or false

Frogs have slightly different life cycles depending on their habitat.

True or False

Q 5 – Circle the correct answer.

Australia is home to how many species of native frogs?

- A. 200
- B. 75
- C. 372
- D. 240

Q 6 - Circle your answer: True or false

Some frogs can climb trees

True or False

LEADERS: The correct answers are at the end of this Program sheet.



Frog Word Quiz

How many frog words can you find from this list?

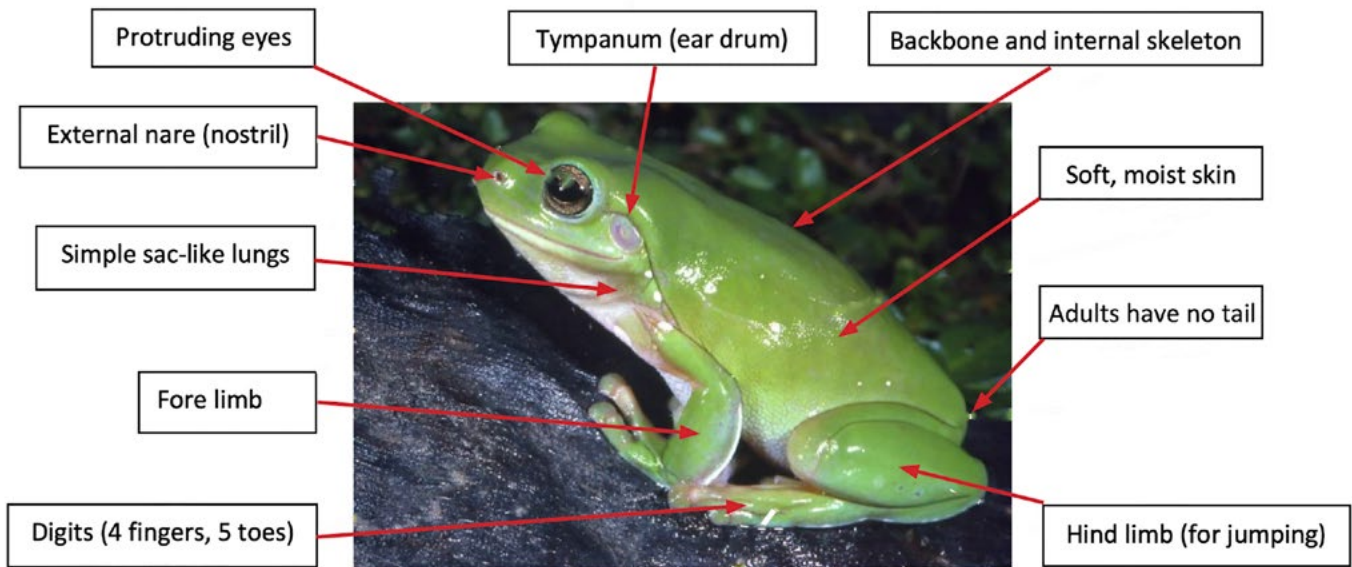
Frog, Eggs, Pond, Tadpole, Water, Green, Toad, Croak, Eyes, Legs, Tail, Ears, Skin

T	O	A	D	g	k	P	q	G	w	T
i	z	v	n	S	h	O	t	R	l	A
o	b	F	y	K	x	N	b	E	z	D
n	d	R	a	l	e	D	u	E	l	P
E	c	O	v	N	r	a	u	N	f	O
Y	o	G	p	z	b	n	q	r	t	L
E	c	b	W	A	T	E	R	e	p	E
S	x	r	a	g	o	h	g	u	a	w
y	x	E	G	G	S	d	L	E	G	S
T	v	n	r	m	y	j	i	k	a	w
n	A	p	f	E	A	R	S	z	u	e
v	b	l	k	r	p	b	t	x	d	q
e	h	g	L	k	C	R	O	A	K	m



Answers for Leaders

Answer to Frog Bits



Answers to Frog Quiz

Q 1 – Circle your answer

Where do frogs live?

C - Both land and water

Q 2 – Circle your answer, True or false

Frogs can change the colour of their skin to camouflage themselves.

True

Q 3 – Put the frog life cycle in order

B. Eggs

D. Tadpole

A. Metamorph (tail still present, fore limbs developed)

C. Adult frog

Q 4 – Circle your answer, True or false

Frogs have slightly different life cycles depending on their habitat.

True

Q 5 – Circle the correct answer.

Australia is home to how many species of native frogs?

D - 240

Q 6 - Circle your answer, True or false

Some frogs can climb trees

True

