



Scouts Victoria
**Building the
Resources For
Victoria's Future
Leaders**



Stronger Communities Through Scouting

For over 119 years Scouts Victoria has helped more than one million young Victorians explore their potential.

The Scout program is active, outdoor learning in small teams. It develops resilience and positive mental health.

Uniquely, the Scout program is structured so every child has an opportunity to develop leadership, as they progress through the five Sections spanning the ages 5-25.

The outcome of the Scout program is happy and confident, young people who have responsible independence — to care for themselves and to help others.

These benefits extend to more than 400 Victorian communities with Scout Groups.

Young people get to plan their own adventures - from hiking and camping, to large national and international events.

They are busy, active and engaged in real, rather than virtual lives.

We strive to ensure that our Scout Groups reflect the broad spectrum of contemporary Victoria. We value the diversity of our members, including gender, sexuality, race, religion and ability. Scouting welcomes all.

We're committed to ensuring that no young person misses out on Scouting due to financial barriers.

We work hard to keep our programs affordable, with weekend camps to the beach, bush, or snow available from as little as \$50.

With your help, Scouts Victoria can do more to build stronger communities and partnerships.



Investment Proposal to Government



Scouts Victoria is seeking **\$16 million across four years** to upgrade and maintain ageing facilities, as well as establish a presence in growth communities.

Minor Hall Refurbishments

25 Halls
\$4 million

Major Hall Refurbishments

8 Halls
\$4 million

New Hall Constructions

8 Halls
\$8 million

AJ2028 Hire Water Treatment Plant

To provide one million litres a day for Jamboree
\$250,000



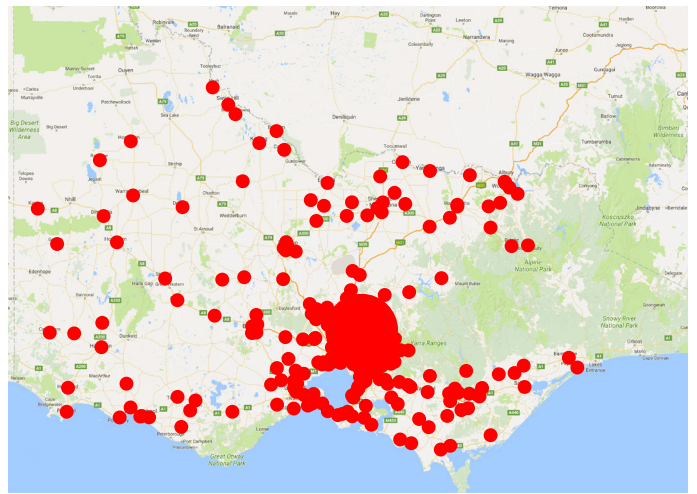
Scouts Victoria

A Trusted Movement Shaping Capable Young Leaders in Over 400 Communities Across Victoria

Enjoyed by more than one million young Victorians and their families since 1907



Contributing to more than 400 local communities, plus managing and sharing 600+ community Halls and campsites



Open to all - regardless of gender, sexuality, race, religion or ability



Co-ed for more than 50 years
(38% female, 62% male)



2 million volunteer-hours per year by adults in Scouting

Australian Jamboree

Maryborough - Queensland, 2025

The Primary Personal Development Opportunity for 11-15 Year Olds

Investing in Australia's Future Leaders

The 26th Australian Scout Jamboree (AJ2025), held from January 6 to 15, 2025, in Maryborough, Queensland, brought together over 9,500 young people and Leaders for ten days of adventure, learning, and personal development. This premier Scouting event showcased the resilience, leadership, and teamwork that define Australia's next generation of leaders. More than just a camp, the Jamboree provided a structured environment for youth to develop practical life skills, build confidence, and form lifelong friendships.

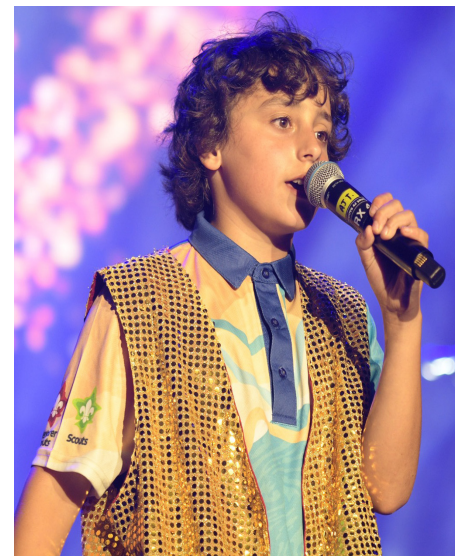
The Jamboree featured a diverse range of activities designed to challenge and inspire young people. Scouts participated in high-adrenaline adventures, such as abseiling and obstacle courses, alongside STEM-based innovation in a robot discovery lab. Unique activities like esky racing

added a distinctly Australian touch, while off-site experiences took Scouts to Hervey Bay, Australia Zoo, and key heritage locations in Maryborough, exposing them to new environments and opportunities for learning.

Beyond its impact on youth, AJ2025 also delivered significant economic and social benefits to the host community. The temporary population increase of 30% injected an estimated **\$10 million into the local economy**, benefiting businesses, tourism operators, and community services. This highlights the broader impact of investing in Scouting — each Jamboree not only empowers young Australians but also provides tangible returns to regional communities.

Internationally, AJ2025 strengthened Australia's global Scouting connections, with participants from New Zealand, the United Kingdom, Canada, South Korea, Norway, and Sri Lanka

contributing to a rich cultural exchange. These international connections foster global citizenship, a quality essential for future Australian leaders in a rapidly evolving world.



Australian Jamboree

Elmore - Victoria, 2028

\$10 Million Economic Stimulus for Victoria

With AJ2028 set to be hosted in Elmore, Victoria, we have a once-in-a-generation opportunity to deliver a legacy event that will shape young lives and benefit our State for years to come. More than 10,000 Scouts, Leaders, and volunteers from across Australia and the world will gather for ten days of adventure, learning, and leadership development.

Boosting the Victorian Economy

Beyond its impact on youth, AJ2028 will inject more than \$10 million into the Victorian economy, supporting local businesses, tourism operators, accommodation providers, and service industries. All will benefit from the temporary population surge, while Victoria is showcased nationally and internationally as a premier destination for major events.

Critical Infrastructure - Water Security

Delivering an event of this size requires infrastructure on the scale of a small regional city, and at the very top of the list is water security. During the Jamboree, participants will collectively consume over one million litres of water for drinking, sanitation, cooking, and activities. This demand exceeds the capacity of Elmore Field Days or any venue in Victoria without significant additional support.

To safeguard health and ensure uninterrupted supply, Scouts Victoria must connect a Reverse Osmosis Treatment Plant to treat the local water supply to potable standards. The system includes:

- Connection to on-site tanks and reticulation networks.
- Continuous monitoring by the manufacturer to guarantee water quality.
- Dedicated generators and a fuel system to avoid reliance on mains power, which is vulnerable to summer weather events such as storms, high winds, and grassfires. Even a few hours of outage could be catastrophic for over 10,000 people onsite.
- A three-month minimum hire period to allow positioning, commissioning, and safe operation.

The total cost of this essential system is

\$250,000

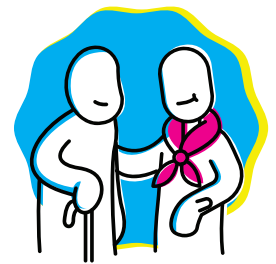


In 2025 Resilient Youth Australia has again surveyed Scouts vs non-Scouts nationally

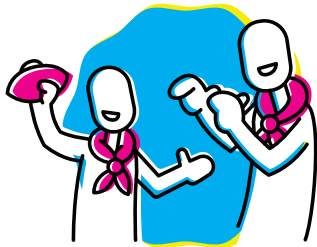
Scouts of all ages, compared with their peers, nationally across school years 5-13...



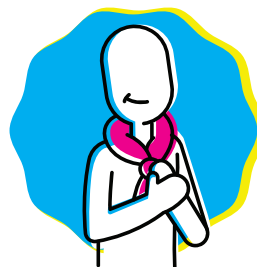
Scouts are 9% more positive and feel 10% better at coping with life



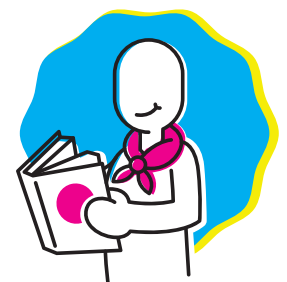
Scouts are 13% more likely to help others



Scouts are 6% more likely to enjoy doing things

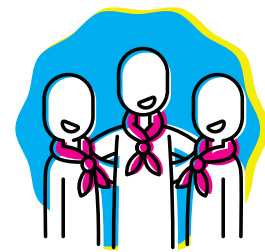


Scouts are 10% more likely to feel good about themselves



Scouts are 36% more likely to read for fun

gain
ally
ionally,



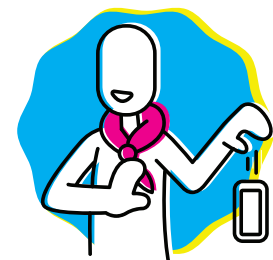
Scouts are 11% more likely to get along with different people



Scouts are 6% more likely to feel they're doing pretty well



Scouts are 20% more likely to deal with problems



Scouts are 10% more likely NOT to use devices overnight

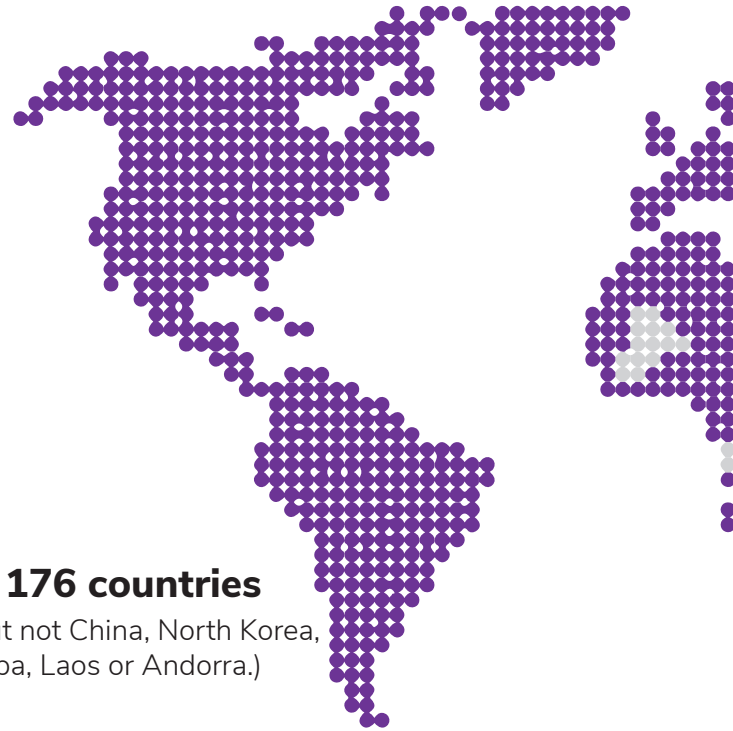


Scouts are 23% more likely to talk with others if they're upset



Overall, Scouts feel more Connected, Protected, and Respected than their peers.

The World Of Scouting

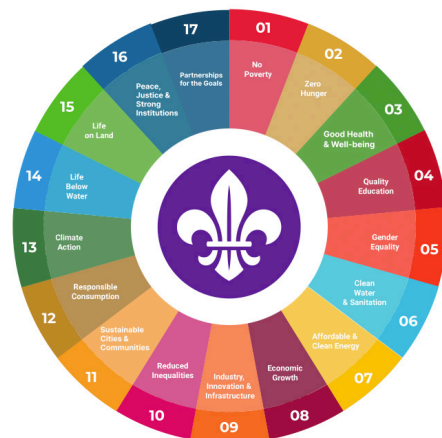


In 176 countries

(But not China, North Korea, Cuba, Laos or Andorra.)



An ethos of helping others



Over 3 billion Service Hours



Everyone gets to learn and develop their own leadership skills

Building positive mental health

Be(ing) prepared: Guide and Scout participation, childhood social position and mental health at age 50—a prospective birth cohort study

Chris Dibben,¹ Chris Playford,² Richard Mitchell³

Conclusions: Participation in Guides or Scouts was associated with better mental health and narrower mental health inequalities, at age 50. This suggests that youth programmes that support resilience and social mobility through developing the potential for continued progressive self-education, ‘soft’ non-cognitive skills, self reliance, collaboration and activities in natural environments may be protective of mental health in adulthood.



A method that is still progressive and evolving after 119 years

Learning by **doing**

Learning in the **outdoors**

Learning in small **teams**

Youth-led, adult-supported



Recognised by UNESCO as the largest provider of non-formal education



EDELRID

EDELRID



SCOUTS



adidas



LABY
SCOUTS



Appreciation

An investment in local Scouting deserves great community recognition. Scouts Victoria can manage professional and friendly events and media relations to mark project milestones, involving the Minister or their delegate, and local Government.

Scout Groups receiving an investment will also invite their local MP to speak at each of their annual report events, and they might even like to join the kids on an abseiling activity or to be 'scarfed up' as a member of the local Scouting supporter community!

Scouts can organise professional media and campaign events for any milestone:

- Local MPs or candidates campaigning for funding
- Artist's impressions
- Announcement of funding
- Sod turn on construction commencement
- Opening of new premises
- Signage
- Promotion through social media



Deputy Prime Minister, Richard Marles, Catherine King MP, and Ella George MP visiting the proposed site for Norlane Scout Hall.

Recognition of a Government investment will also extend into the communities that share Scouting facilities such as service clubs and educational groups.

As a non-partisan organisation worldwide, Scouting will always work collaboratively with all major parties to achieve community outcomes, and Scout Groups will maintain connections with MPs and Councillors across the spectrum who have supported them. This is consistent with providing professional and friendly recognition of a Government investment in Scouting.



The Honourable Natalie Suleyman MP and Ros Spence MP at the opening of Gilgai Plains Scout Hall.



Minister for Youth, The Honourable Natalie Suleyman MP and Nina Taylor MP at the opening of Albert Park Scout Hall.



Bridget Vallence MP at Mooroolbark Scout Group.

Priority Projects

Scouts Victoria Community Development Opportunities

The Model — Scouting is a great manager of shared community facilities

Scouting has facilities requirements that deliver great multi-purpose community assets.

- The Scout program is active and physical both indoors and outdoors, so facilities are robust enough to handle a ball game or other vigorous indoor activities.
- Scouting provides a sense of belonging for young people, so facilities include the ability for young people to display their achievement and be proud of their identity. Scout facilities become places where young people feel comfortable, supported, and engaged.
- Scouting needs time and space available to grow and so is able to share excess capacity with other community groups.
- Scouts are experienced property managers, able to provide asset management and upkeep with little administration or management overhead.

The shared community facility of the future is one that is built with Scouting in mind, managed by Scouting as a proud custodian of community infrastructure, and actively utilised by a range of community organisations to provide a vibrant hub.

This model benefits greatly from a key daytime tenant which is why partnering with the schools has been so successful and a model to replicate. Scouting has successfully created and delivered active, practical education to Year 12 and beyond in lock step with schools' academic programs.

Scouts Victoria is seeking **\$16 million across four years** to upgrade and maintain ageing facilities, as well as establish a presence in growth communities.

Economic Benefit

The delivery of these Scouts and Community Centres — based on a total construction value of \$16 million over four years — Scouts Victoria estimates that this will provide potential economic benefits including:

- Total employment of 337 jobs (100 direct).
- Flow-on output impact of \$56m and total output impact of \$80m.
- Total value added impact of \$32.5m
- Management and stewardship of facilities at no cost to the community.

These estimates need further validation based on final construction value and locations of projects.

Scouts Victoria is a willing co-contributor to these projects, alongside contributions leveraged from local partners for each project.



Minor Refurbishments

\$150,000 and Below

These projects are smaller in nature and generally include a combination of kitchens, floors, painting, disability access, and bathroom upgrades. Many of these Halls also require many safety improvements including exit door hardware, fire extinguishers, and installation of safety switches.

More detailed scoping is available upon request.

Minor Refurbishments

[Sorted by State electorate]

Group	Electorate	Scope
1st Ashburton	Ashwood	Bathrooms, kitchens, and replace deck with a ramp
Phillip Island	Bass	Bathroom renovations
Black Rock	Brighton	Roof replacement
Moodemere	Dandenong	Toilet, flooring, and painting upgrades
St Mina Hallam	Dandenong	Fence, roof, and facility upgrades
1st Strathmore	Essendon	Accessible ramp
1st Mount Clear	Eureka	Accessible toilets and kitchen upgrade
5th Ballarat	Eureka	Bathroom renovations
1st Langwarrin	Hastings	Window replacement
1st Somerville	Hastings	Roof repairs
3rd Melton	Melton	Kitchen upgrade
1st Milleara	Niddrie	Energy efficiency upgrades
5th Keilor	Niddrie	Energy efficiency upgrades
State Rover Centre	Oakleigh	Disability accessible ramp
Pakenham	Pakenham	Kitchen upgrade
1st Coburg	Pascoe Vale	Roof replacement
2nd Colac	Polwarth	Accessible entry upgrade
1st Reservoir	Preston	Accessible toilet and ramp upgrades
1st Cheltenham	Sandringham	Comprehensive Hall refurbishment
1st Mooroopna	Shepparton	Flood damage repairs
Warrnambool	South-West Coast	Hall exterior renewal
3rd Sunbury	Sunbury	Landscaping upgrades
Tulla Park	Sunbury	Hall refurbishment
3rd Ballarat	Wendouree	Flooring repairs
1st Altona	Williamstown	Roof and electrical upgrades

Major Refurbishments

\$150,000-\$600,000



These are larger projects and in addition to the minor projects can include roofing, restumping, asbestos removal, lighting, kitchens, floors, painting, disability access, bathroom upgrades, and external cladding.

Major Refurbishments or Extensions

[Sorted by State electorate]

Group	Electorate	Scope
Norm Anderson Activity Centre	Essendon	Building renovation
2nd Lara	Lara	Construction of small Scout Hall
1st Rochester	Murray Plains	Flood damage repair
1st Creswick	Ripon	Construction of small Scout Hall
Guide and Scout Water Activity Centre	Sandringham	Bathroom upgrades
Port Fairy	South-West Coast	Asbestos removal and electrical upgrades
1st St Albans	St Albans	Building renovations
2nd Werribee	Werribee	Construction of small Scout Hall



New Scout Halls



> \$1 million

The population of Victoria is continuing to grow. Until recently, Scouting had not built new facilities that allow services to be delivered to young Victorians in growth corridors. Over recent years Scouts Victoria has built and/or purchased new Scout Halls in Doreen, Caroline Springs, Clifton Hill, Point Cook, Carrum Downs, Kalkallo, Alexandra, Sebastopol, Aintree, Avoca and Myrtleford.

There are a series of Halls in progress including Bannockburn and Norlane West.

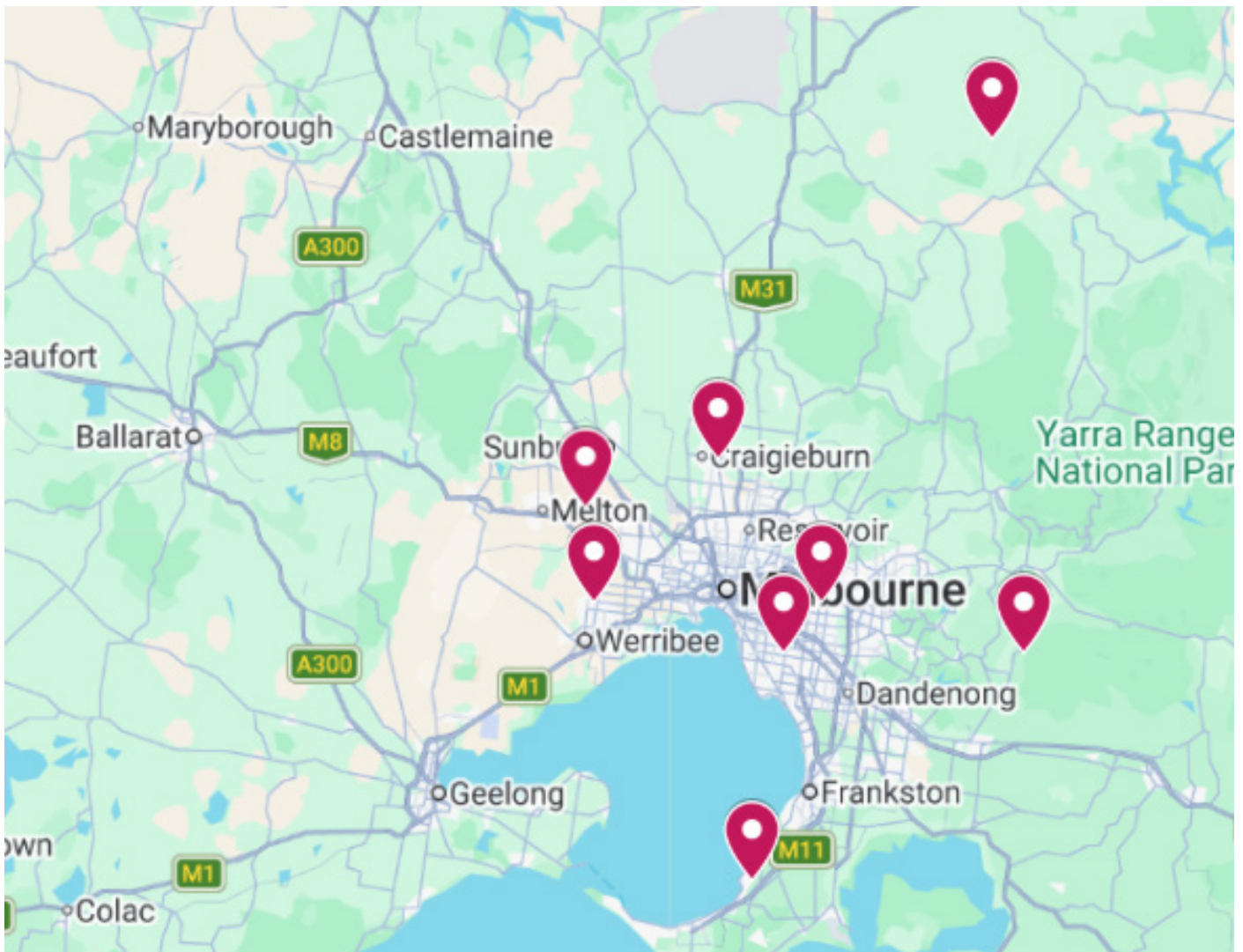
Analysis of projected population data and our current stock of Halls have helped us to identify the following priority locations for new Scout facilities:

Growth Corridors

High Priority New Scout Halls

[Sorted by State electorate]

- | | |
|-------------------------------|------------|
| Heritage and Archive Centre | Bentleigh |
| State Performing Arts Centre | Box Hill |
| Mafeking Rover Park | Eildon |
| Craigieburn | Kalkallo |
| Gilwell Park Adventure Centre | Monbulk |
| Bay Park Adventure Centre | Mornington |
| Plumpton | Sydenham |
| Tarneit | Tarneit |



Spaces That Shape Tomorrow's Leaders

Completed Projects

Aintree - \$1,100,000



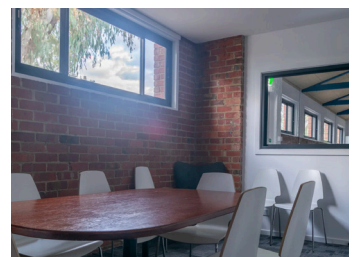
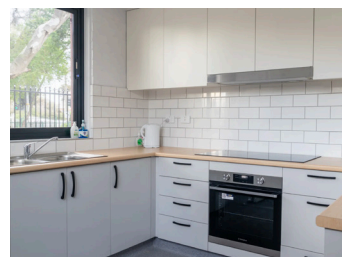
Scouts Victoria's Property Team

Scouts Victoria employs a Property Team comprised of licensed builders, real estate and project management professionals who provide support and oversight to construction projects from planning through to completion. This team works closely with our Board Property Subcommittees for governance.

These supports include:

- Planning and Group engagement
- Engagement with Council for Planning and Building permits
- Documentation of project scope
- Overseeing competitive tender processes
- Appointment and contracting of builders
- Project support, administration and management
- Defects review and practical completion
- Financial oversight and management of reporting requirements
- Arranging signage and promotional opportunities

Albert Park - \$500,000



Koo Wee Rup - \$268,368



Pakenham - \$192,559



Mafeking Rover Park

A Place Worth Standing Behind

For generations, Mafeking Rover Park has been shaped by young people. Built by Scouts and cared for by volunteers, it has been a place where leadership is tested, friendships are formed, and service to others is lived, not taught.

Over its lifetime, more than 30,000 people have passed through Mafeking's gates, and today it continues to support around 6,500 participants each year. Spanning more than 320 acres and home to over 30 purpose-built structures, the park provides the space, infrastructure and flexibility to deliver large-scale, complex and youth-led programs year-round.

Mafeking is more than a campsite. It is a nationally recognised hub for motorsport and driver education within Scouting, drawing participants from across Australia and New Zealand. The park supports a range of age-appropriate programs that introduce young people to vehicles, driving, and mechanical skills in a structured, educational environment.

Through events such as Top Gear, Mafeking delivers driver awareness and vehicle education for young people from Joey Scouts through to Venturer Scouts. These experiences focus on road safety, hazard awareness, decision-making, teamwork, and respect for vehicles, providing a safe and practical introduction to driver education well before young people reach driving age.

Mafeking is also home to Mudbash, one of Scouting's largest and most established motorsport events in Australia. Mudbash brings together Rover Scouts and adult members from across the country to participate in off-road driving, navigation, and vehicle recovery activities. The event is delivered across Mafeking's established track network, allowing for hands-on learning in a controlled environment.

Across these programs, participants do far more than drive. They learn mechanical skills, vehicle maintenance, recovery techniques, risk assessment, and leadership under pressure. Younger members experience motorsport through observation, mentoring, and tailored activities, while members aged 18 and over take on more advanced responsibilities, including vehicle operation, course management, and mentoring roles. These experiences create clear pathways for skill development as young people move through the Scouting Sections.

Beyond motorsport, Mafeking regularly hosts major Scouting events, leadership camps, training weekends, and large-scale activities throughout the year as well as Group camps and hosts the public and community groups in camping experiences. It is a site where young people plan and lead programs, manage logistics, operate equipment, support one another, and take genuine responsibility for complex activities. These are practical, real-world experiences that build confidence, judgement, and initiative.

When Mafeking faced its most significant challenge in decades this year, losing the majority of its infrastructure to bushfire, the Scouting community responded instinctively.

Members across Australia and around the world rallied together, demonstrating the strength of a Movement built on service and shared responsibility. In just days, tens of thousands of dollars were raised to support recovery and rebuilding. While this response has been extraordinary, it is only the beginning. The scale of damage means rebuilding Mafeking will require sustained effort, long-term investment, and ongoing partnerships to ensure the park can continue to serve future generations of Scouts.

A Mafeking Bushfire Recovery badge, designed by a Rover, was released as part of this effort. It provides members with a tangible way to show their support and stand alongside Mafeking as it begins its next chapter.



Investing in Places That Build Leaders

Mafeking Rover Park highlights the broader value of Scouting infrastructure across Victoria, Australia, and beyond. These sites are not passive assets. They are active learning environments where young people develop leadership through experience, service and challenge.

Investment in Scouting places is an investment in resilient communities. Facilities like Mafeking enable young people to progress through Outdoor Adventure Skills, take on leadership roles, develop technical and mechanical capability, and contribute meaningfully to their communities. With continued partnership and support, Mafeking Rover Park will continue to do what it has always done — help young people grow into capable, community-minded leaders who are ready to step up when their communities need them.



Strategic Growth and Development

As Victoria's population continues to increase our goal is to ensure that Scouting continues to be accessible and relevant to all Victorians regardless of which community they are living.


Our Growth Strategy includes a particular focus on:

- Metropolitan growth corridors
- Rural and regional participation
- Partnerships with education providers
- Regions of socio-economic disadvantage
- Cultural diversity
- Access for those with disability
- Financial affordability for families

We achieve this through:

- Delivering an engaging Scouting Program
- High quality leadership training and professional development
- Improved Leader recruitment strategies
- Promotion of program achievements to the community
- Online engagement for young people to sustain engagement through lockdowns
- Providing fee relief where necessary
- Ensuring appropriate insurances are in place
- Reviewing and evaluating the outcomes achieved for young people

This growth requires planning, coordination, evaluation and reporting which is overseen by our Strategic Growth Manager.



Victoria's youth strategy 2022-2027

**Our promise,
Your future**

Created with thousands of young Victorians

VICTORIA
State Government

The work of our Growth Team contributes and aligns with the Victorian Government Youth Strategy 2022-2027.



Continued access to the VMIA CSO Program is a key component of this support for Scouting in Victoria



Gilwell Park

A Multi-Million Dollar Transformation for the Future of Scouting

Investing in World-Class Facilities for Youth, Adventure, and Community Engagement

Gilwell Park, the heart of Scouting in Victoria, is currently undergoing a major transformation, ensuring it remains a premier outdoor adventure and leadership training destination. With a multi-million dollar investment, Scouts Victoria is delivering new and upgraded facilities that will not only enhance the experience for youth members but also meet the growing demand from external groups, schools, and corporate bookings.

As part of this redevelopment, Scouts Victoria has already delivered several major improvements. The Bouldering Complex, a dedicated activity area, has been revamped to enhance skill-building opportunities. The Abseiling Wall has been completely re-skinned, providing a modern, safer, and more durable structure for youth to test their limits and build resilience. Additionally, the Rock Climbing Facilities have been expanded, offering new challenges for participants to develop their teamwork, problem-solving, and confidence in a safe and supportive environment.

Now, attention is turning to critical infrastructure upgrades, with new accommodation and dining facilities under development. These new buildings will ensure greater comfort and capacity for both Scouting and external visitors, meeting modern expectations for group accommodation and event hosting. The new dining hall will create a central hub for communal gatherings, enhancing the overall experience for youth camps, leadership retreats, and external bookings.

By investing in these upgrades, Scouts Victoria is strengthening Gilwell Park's role as a key hub for outdoor education, adventure training, and community engagement. These improvements will not only benefit thousands of Victorian Scouts but also expand opportunities for schools, businesses, and other organisations to utilise the site for leadership development and team-building activities.

This transformation ensures that Gilwell Park remains a state-of-the-art adventure centre, delivering exceptional experiences for generations of young Australians while also enhancing its appeal as a leading venue for external bookings and events.



Meet One Of Our Many Future Leaders

A Young Leader Shaping the Future

At just 19 years old, Charlotte 'Charli' Ogden has already made an extraordinary impact on her community and beyond. Recently named South Gippsland Shire Council's Young Citizen of the Year, Charli exemplifies the values of leadership, resilience, and service that Scouting instills in young people. From her environmental conservation work to her international Scouting adventures, she is paving the way for a sustainable, inclusive, and engaged future.

Charli is deeply passionate about environmental conservation, studying a Diploma of Conservation and Ecosystem Management at TAFE Gippsland. Her focus on vegetation assessment, regeneration projects, and sustainable land management aligns with her commitment to building a greener future. Her dedication extends beyond the classroom — she works at a plant nursery, gaining hands-on experience in biodiversity and native flora restoration, and actively promotes foraging and food security as part of her sustainability mission.

Charli's journey began in Scouting at age seven, where she discovered her passion for leadership and outdoor adventure. Now a Rover and qualified Scout Leader at 1st Inverloch Scout Group, she continues to inspire the next generation of youth. Her leadership extends beyond her local Group, between 2019 and 2021, she represented South Gippsland in the

Victorian Youth Congress, working alongside peers and government representatives to shape the Victorian Youth Strategy.

Through Scouting, Charli has developed invaluable skills in teamwork, problem-solving, and resilience. She describes receiving the Young Citizen of the Year award as "a huge honour," emphasising the importance of community support and the mentors who have encouraged



her along the way.

International Scouting - Pushing Boundaries in New Zealand

Charli's Scouting experiences are not just local they're global. Representing Scouts Australia, she was selected to join the Australian Contingent to the New Zealand Venture, an elite, multi-week expedition that brings together Venturer Scouts from across the world for extreme challenges and cultural exchange.

For six days, Charli embarked on a canyoning expedition with eleven strangers, exploring the remote landscapes of New Zealand's rugged gorges and pristine waterways. This adventure saw her abseiling down waterfalls, leaping into hidden pools, and navigating narrow rock passages — a physically and mentally demanding challenge. By the end, not only had she become an experienced canyoner, but she had also formed lifelong

friendships, proving that teamwork and trust can transform a group of strangers into a tight-knit team.

Following the expedition, Charli joined over 1,000 Venturer Scouts at the New Zealand Venture base camp for a week of high-adrenaline activities, leadership challenges, and cultural experiences. The event highlighted how Scouting fosters global citizenship, equipping young people with the ability to adapt, lead, and thrive in any environment.

Charli's journey, from a young Cub Scout to an international representative of Scouting and an award-winning youth leader demonstrates the transformational power of Scouting. Whether she's advocating for environmental change, leading young Scouts, or challenging herself in extreme outdoor adventures, Charli is proof that investing in youth programs like Scouting builds stronger, more capable, and socially responsible future leaders.



Scouts Victoria CDS

Supporting the Container Deposit Scheme

Turning Containers into Opportunities for Youth and the Environment

Scouts Victoria has made significant strides in sustainability and community fundraising through the Container Deposit Scheme (CDS), playing a key role in reducing waste while supporting local Scout Groups and the future of Scouts Victoria.

Since the Scheme opened, Scouts Victoria has established six high-speed depots in Mount Waverley, Glen Waverley, Carnegie, Campbellfield, Breakwater, and Burwood, processing over 90 million drink containers.

This initiative has been a win for both the environment and the Scouting Movement, helping to divert waste from landfill while creating a sustainable funding stream for Scouting programs across Victoria.

Alongside the major depots, Scout Groups across Victoria are actively participating in CDS at a local level, setting up collection bins at Scout Halls and within their communities. These local fundraising efforts have provided a new way for Groups to generate funds, ensuring that more young Victorians can access Scouting experiences, outdoor education, and leadership development opportunities. Through this grassroots recycling initiative, Scout Groups are engaging families, schools, and local businesses in responsible waste management while directly funding camps, equipment, and activities.

A major milestone in the CDS expansion has been the installation of a high-volume Singulator at the Mount Waverley depot, dramatically increasing processing capacity and allowing Scouts Victoria to partner with commercial businesses such as hotels and clubs. These partnerships further scale up recycling efforts, making it easier for businesses to participate while supporting Scouting's environmental and community-focused programs.

Beyond the financial benefits, Scouts Victoria has used the CDS initiative to educate young people about sustainability and environmental responsibility. Thousands of youth members have had the opportunity to visit depots, learning firsthand about the recycling process, circular economy, and the impact of waste reduction efforts. This hands-on engagement reinforces Scouting's commitment to environmental leadership, ensuring that the next generation is equipped with the knowledge and skills to make a difference.

The success of Scouts Victoria's CDS initiative is a testament to the dedication of volunteers, youth members, and local communities, who have embraced this opportunity to fundraise while making a tangible impact on the environment. With an expanding network of Scout-run depots and collection sites, Scouts Victoria continues to demonstrate how youth-led initiatives can drive real change, benefiting local communities and the long-term sustainability of Scouting in Victoria.







Scouts
VICTORIA

152 Forster Rd
Mount Waverley VIC 3149

t. (03) 8543 9800
www.scoutsvictoria.com.au